

Gate Valves

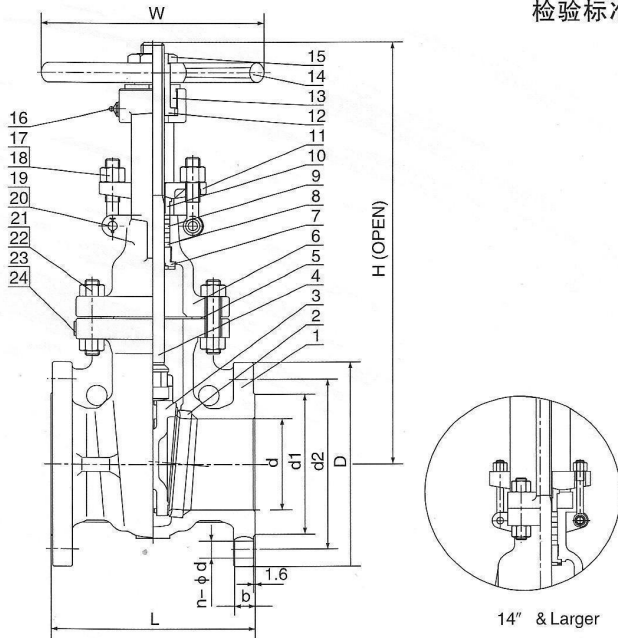
铸钢产品

Cast steel products

CLASS 150 GATE VALVE

Standards:

结构长度 Face to Face Dimensions: ANSI B16.10
 法兰尺寸 End Flange Dimensions: ANSI B16.5
 设计标准 Basic Design: API 600
 检验标准 Test Standart: API 598



Material List

NO	Part Name	Qty.	Material
1	阀体 Body	1	A216 WCB
2	阀座 Seat	2	A105+HF
3	闸板 Wedge	1	A216 WCB+F6
4	阀杆 Stem	1	A182 F6
5	垫片 Gasket	1	08F+Flexible Graphite
6	阀盖 Bonnet	1	A216 WCB
7	密封座 Back Seat	1	A276 410
8	填料 Packing	2	Stainless Steel Wire
9	填料 Packing	4~5	With Flexible Graphite
10	压套 Gland	1	A276 410
11	压板 Gland Flange	1	A216 WCB
12	阀母 Stem Nut	1	D-2
13	压母 Gland Nut	1	A29 1035
14	手轮 Handwheel	1	60-40-18
15	锁母 Lock Nut	1	A29 1035
16	油杯 Oilfiller	1	A570 Gr.A
17	螺栓 Eye Bolt	2	A193 B7
18	螺母 Eye Nut	2	A194 2H
19	销轴 Pin	2	A29 1035
20	开口销 Split Pin	2	A570 Gr.A
21	螺栓 Bolt		A193 B7
22	螺母 Nut		A194 2H
23	铆钉 Rivet	2	304
24	铭牌 Name Plate	1	304

DIMENSIONS AND WEIGHTS

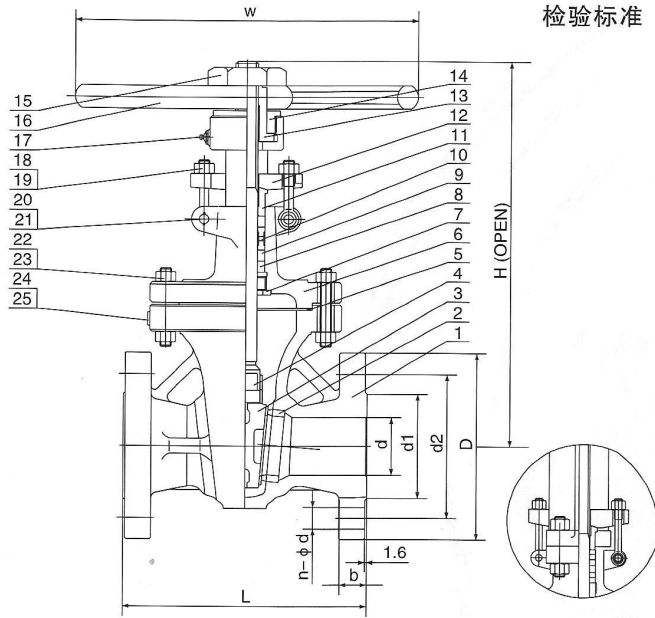
NPS	in	2	2-1/2	3	4	5	6	8	10	12	14	16	18	20	24	26	28	30	32	36	40	42
d	mm	51	64	76	102	127	152	203	254	305	337	387	438	489	591	641	692	743	788	889	991	1042
L	in	7.00	7.50	8.00	9.00	10.00	10.50	11.50	13.00	14.00	15.00	16.00	17.00	18.00	20.00	22.00	24.00	24.00	26.00	28.00	32.00	32.00
(RF)	mm	178	190	203	229	254	267	292	330	356	381	406	432	457	508	559	610	610	660	711	811	811
L1	in	8.50	9.50	11.14	12.00	15.00	15.88	16.50	18.00	19.76	22.50	24.00	26.00	28.00	32.00	34.00	36.00	36.00	38.00	40.00	42.00	42.00
(BW)	mm	216	241	283	305	381	403	419	457	502	572	610	660	711	813	864	914	914	965	1016	1067	1067
L2	in	7.50	8.00	8.50	9.50	10.50	11.00	12.00	13.50	14.50	15.50	16.50	17.50	18.50	20.50	/	/	/	/	/	/	/
(RTJ)	mm	191	203	216	241	267	279	305	343	368	394	419	445	470	521	/	/	/	/	/	/	/
d1	in	3.62	4.13	5.00	6.18	7.32	8.50	10.63	12.76	15.00	16.26	18.50	20.98	22.99	27.24	29.5	31.5	33.75	36.00	40.25	44.25	47.00
	mm	92	105	127	157	186	216	270	324	381	413	470	533	584	692	749.3	800	857	915	1022.35	1124	1194
d2	in	4.75	5.50	6.00	7.50	8.50	9.50	11.75	14.25	17.00	18.75	21.25	22.75	25.00	29.50	31.75	34.00	36.00	38.50	42.75	47.25	49.50
	mm	120.5	139.5	152.5	190.5	216	241.5	298.5	362	432	476	540	578	635	749.5	806.5	863.6	914.5	928	1085.85	1200	1257.3
D	in	6.00	7.00	7.50	9.00	10.00	11.00	13.50	16.00	19.00	21.00	23.50	25.00	27.50	32.00	34.25	36.50	38.75	41.75	46.00	50.75	53.00
	mm	152	178	190	229	254	279	343	406	483	533	597	635	699	813	870	927	984	1060.5	1168.4	1289	1346
b	in	0.75	0.88	0.94	0.94	0.94	1.00	1.13	1.19	1.25	1.38	1.44	1.56	1.69	1.88	2.69	2.81	2.94	3.19	3.56	3.56	3.81
	mm	19	22.5	24	24	24	26	29	31	32	35	37	40	43	48	70	71.5	75	81	90.5	90.5	97
n-φd	in	4-0.75	4-0.75	4-0.75	8-0.75	8-0.87	8-0.87	8-0.87	12-1.00	12-1.00	12-1.13	16-1.13	16-1.25	20-1.25	20-1.38	24-1.38	28-1.38	28-1.38	28-1.62	32-1.62	36-1.62	36-1.62
	mm	4-19	4-19	4-19	8-19	8-22	8-22	8-22	12-25	12-25	12-29	16-29	16-32	20-32	20-35	24-35	28-35	28-35	28-41	32-41	36-41	36-41
H	in	15.20	17.13	19.02	23.11	26.50	30.20	37.60	45.12	52.28	59.80	67.76	74.80	83.31	97.64	110.71	120.67	134.5	145.3	161.8	189.5	201.6
(open)	mm	386	435	483	587	673	767	955	1146	1328	1519	1721	1900	2116	2480	2812	3065	3417	3690	4109	4812	5120
W	in	7.87	7.87	9.84	9.84	11.81	11.81	13.78	17.72	19.69	18.11	18.11	18.11	24.02	24.02	28.35	31.5	35.43	35.43	35.43	39.37	39.37
	mm	200	200	250	250	300	300	350	450	500	460*	460*	460*	610*	610*	720*	800*	900*	900*	900*	1000*	1000*
WT	RF	20	30	36	53	71	85	136	220	323	387	553	660	810	1250	1560	1770	2033	2750	3207	4235	5140
(Kg)	BW	17	26	29	46	66	77	116	202	294	350	506	575	720	1130	1430	1542	1970	2610	3107	4015	5090

* Manual gear operator is recommended.

CLASS 300 GATE VALVE

Standards:

结构长度 Face to Face Dimensions: ANSI B16.10
 法兰尺寸 End Flange Dimensions: ANSI B16.5
 设计标准 Basic Design: API 600
 检验标准 Test Standart: API 598



12" & Larger

Material List

No	Part Name	Qty	Material
1	阀体 Body	1	A216 WCB
2	阀座 Seat	2	A105+HF
3	闸板 Wedge	1	A216 WCB+F6
4	阀杆 Stem	1	A182 F6
5	垫片 Gasket	1	304 Wound Grafoil
6	阀盖 Bonnet	1	A216 WCB
7	密封座 Back Seat	1	A276 410
8	填料 Packing	2	Stainless Steel Wire
9	填料 Packing	4-5	With Flexible Graphite
10	隔环 Distance Ring	1	A276 410
11	压套 Gland	1	A276 410
12	压板 Gland Flange	1	A216 WCB
13	阀母 Stem Nut	1	D-2
14	压母 Gland Nut	1	A29 1035
15	锁母 Lock Nut	1	A29 1035
16	手轮 Handwheel	1	60-40-18
17	油杯 Oilfiller	1	A570 Gr.A
18	螺栓 Eye Bolt	2	A193 B7
19	螺母 Eye Nut	2	A194 2H
20	销轴 Pin	2	A29 1035
21	开口销 Split Pin	2	A570 Gr.A
22	螺栓 Bolt		A193 B7
23	螺母 Nut		A194 2H
24	铆钉 Rivet	2	304
25	铭牌 Name Plate	1	304

DIMENSIONS AND WEIGHTS

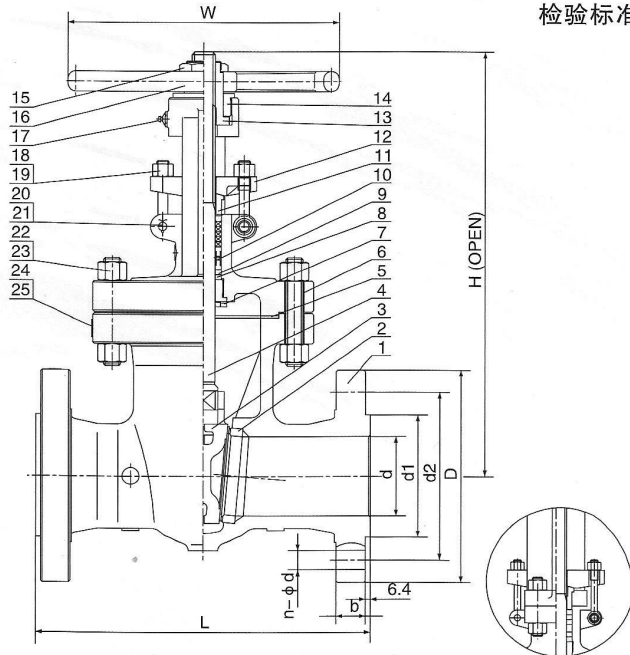
NPS	in	2	2-1/2	3	4	5	6	8	10	12	14	16	18	20	22	24	28	30
d	mm	51	64	76	102	127	152	203	254	305	337	387	432	483	533	584	686	736.6
L-L1	in	8.50	9.50	11.12	12.00	15.00	15.88	16.50	18.00	19.75	30.00	33.00	36.00	39.00	43.00	45.00	53.00	55.00
(BF-BW)	mm	216	241	283	305	381	403	419	457	502	762	838	914	991	1092	1143	1346	1397
L2	n	9.12	10.12	11.74	12.62	15.62	16.50	17.12	18.62	20.37	30.62	33.62	36.62	39.75	43.86	45.87	54.00	56.00
(RTJ)	mm	232	257	298	321	397	419	435	473	518	778	854	930	1010	1114	1165.2	1371.6	1422.5
d1	in	3.62	4.13	5.00	6.18	7.32	8.50	10.63	12.76	15.00	16.26	18.50	20.98	22.99	25.25	27.24	31.5	33.74
	mm	92	105	127	157	186	216	270	324	381	413	470	533	584	641.5	692	800	857
d2	in	5.00	5.87	6.63	7.87	9.25	10.63	13.00	15.25	17.75	20.25	22.50	24.75	27.00	29.25	32.00	37.00	39.25
	mm	127	149	168.5	200	235	270	330	387.5	451	514.5	571.5	628.5	686	743	813	939.8	997
D	in	6.50	7.50	8.25	10.00	11.00	12.50	15.00	17.50	20.25	23.00	25.50	28.00	30.50	32.99	36.00	40.75	42.99
	mm	165	190	210	254	279	318	381	445	521	584	648	711	775	838	914	1035	1092
b	in	0.88	1.00	1.14	1.26	1.38	1.46	1.65	1.89	2.01	2.13	2.28	2.40	2.52	2.76	2.76	3.38	3.62
	mm	23	26	29	32	35	37	42	48	51	54	58	61	64	70	70	86	92
n-φd	in	8-0.75	8-0.87	8-0.87	8-0.87	8-0.87	12-0.87	12-1.00	16-1.13	16-1.25	20-1.25	20-1.38	24-1.38	24-1.38	24-1.62	24-1.62	28-1.75	28-1.89
	mm	8-19	8-22	8-22	8-22	8-22	12-22	12-25	16-29	16-32	20-32	20-35	24-35	24-35	24-41	24-41	28-45	28-48
H	in	16.42	18.11	20.71	25.59	27.32	32.44	38.86	46.93	56.34	61.38	69.21	76.46	84.45	102.99	114.33	128.11	145.39
(open)	mm	417	460	526	650	694	824	987	1192	1431	1559	1758	1942	2145	2616	2904	3254	3693
W	in	7.87	9.84	9.84	9.84	11.81	13.78	17.72	19.69	22.05	18.11	18.11	24.02	24.02	28.35	29.92	29.92	35.43
	mm	200	250	250	250	300	350	450	500	560	460*	460*	610*	610*	720*	760*	760*	900*
WT	RF	30	39	55	83	92	137	240	333	536	699	1010	1205	1720	2390	2615	3150	3735
(Kg)	BW	26	34	47	68	77	118	195	271	432	595	848	1025	1460	2175	2480	2905	3510

* Manual gear operator is recommended.

CLASS 600 GATE VALVE

Standards :

结构长度	Face to Face Dimensions:	ANSI B16.10
法兰尺寸	End Flange Dimensions:	ANSI B16.5
设计标准	Basic Design:	API 600
检验标准	Test Standart:	API 598



10" & Larger

Material List

No	Part Name	Qty	Material
1	阀体 Body	1	A216 WCB
2	阀座 Seat	2	A105+HF
3	闸板 Wedge	1	A216 WCB+F6
4	阀杆 Stem	1	A182 F6
5	垫片 Gasket	1	304 Wound Grafoil
6	阀盖 Bonnet	1	A216 WCB
7	密封座 Back Seat	1	A276 410
8	填料 Packing	2	Stainless Steel Wire
9	填料 Packing	4-5	With Flexible Graphite
10	隔环 Distance Ring	1	A276 410
11	压套 Gland	1	A276 410
12	压板 Gland Flange	1	A216 WCB
13	阀母 Stem Nut	1	D-2
14	压母 Gland Nut	1	A29 1035
15	锁母 Lock Nut	1	A29 1035
16	手轮 Handwheel	1	60-40-18
17	油杯 Oilfiller	1	A570 Gr.A
18	螺栓 Eye Bolt	2	A193 B7
19	螺母 Eye Nut	2	A194 2H
20	销轴 Pin	2	A29 1035
21	开口销 Split Pin	2	A570 Gr.A
22	螺柱 Bolt		A193 B7
23	螺母 Nut		A194 2H
24	铆钉 Rivet	2	304
25	铭牌 Name Plate	1	304

DIMENSIONS AND WEIGHTS

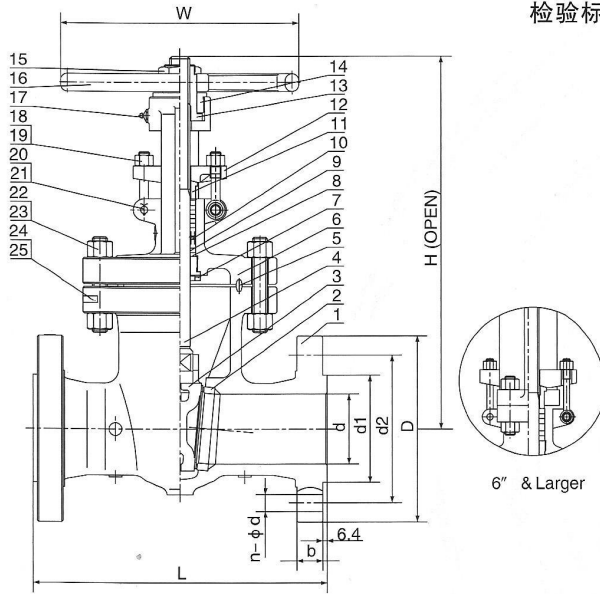
NPS	in	2	2-1/2	3	4	6	8	10	12	14	16	18	20	24
d	mm	51	64	76	102	152	200	248	298	327	375	419	464	559
L-L1	in	11.50	13.00	14.00	17.00	22.00	26.00	31.00	33.00	35.00	39.00	43.00	47.00	55.00
(BF-BW)	mm	292	330	356	432	559	660	787	838	889	991	1092	1194	1397
L2	in	11.62	13.12	14.12	17.12	22.12	26.12	31.12	33.12	35.12	39.12	43.12	47.25	55.38
(RTJ)	mm	295	333	359	435	562	664	791	841	892	994	1095	1200	1407
d1	in	3.62	3.94	5.00	6.18	8.50	10.63	12.76	15.00	16.25	18.50	20.98	22.99	27.25
	mm	92	100	127	157	216	270	324	381	413	470	533	584	692
d2	in	5.00	5.87	6.62	8.50	11.50	13.75	17.00	19.25	20.75	23.75	25.75	28.50	33.00
	mm	127	149	168	216	292	349	432	489	527	603	654	724	838
D	in	6.50	7.50	8.25	10.75	14.00	16.50	20.00	22.00	23.75	27.00	29.25	32.00	37.00
	mm	165	190	210	273	356	419	508	559	603	686	743	813	940
b	in	1.00	1.14	1.26	1.50	1.89	2.20	2.52	2.64	2.76	3.03	3.27	3.50	4.00
	mm	26	29	32	38	48	56	64	67	70	77	83	89	102
n-φd	in	8-0.75	8-0.87	8-0.87	8-1.00	12-1.13	12-1.25	16-1.38	20-1.38	20-1.50	20-1.62	20-1.75	24-1.75	24-2.00
	mm	8-19	8-22	8-22	8-25	12-29	12-32	16-35	20-35	20-38	20-41	20-44	24-44	24-52
H	in	16.81	18.62	21.18	25.87	34.33	43.35	50.35	58.50	64.69	70.79	82.72	88.94	110.51
(open)	mm	427	473	538	657	872	1101	1279	1486	1643	1798	2101	2259	2807
W	in	9.84	9.84	11.81	13.78	19.69	22.05	28.35	24.02	24.02	24.02	24.02	29.92	29.92
	mm	250	250	300	350	500	560	720	610*	610*	610*	610*	760*	760*
WT	RF	41	58	88	131	253	413	623	784	1288	1820	2150	2540	4430
(Kg)	BW	35	50	68	104	208	328	496	637	1120	1448	1828	2201	4205

* Manual gear operator is recommended.

CLASS 900 GATE VALVE

Standards:

结构长度	Face to Face Dimensions:	ANSI B16.10
法兰尺寸	End Flange Dimensions:	ANSI B16.5
设计标准	Basic Design:	API 600
检验标准	Test Standart:	API 598



Material List

No	Part Name	Qty	Material
1	阀体 Body	1	A216 WCB
2	阀座 Seat	2	A105+HF
3	闸板 Wedge	1	A216 WCB+F6
4	阀杆 Stem	1	A182 F6
5	垫片 Gasket	1	A29 1008
6	阀盖 Bonnet	1	A216 WCB
7	密封座 Back Seat	1	A276 410
8	填料 Packing	2	Stainless Steel Wire
9	填料 Packing	4-5	With Flexible Graphite
10	隔环 Distance Ring	1	A276 410
11	压套 Gland	1	A276 410
12	压板 Gland Flange	1	A216 WCB
13	阀母 Stem Nut	1	D-2
14	压母 Gland Nut	1	A29 1035
15	锁母 Lock Nut	1	A29 1035
16	手轮 Handwheel	1	60-40-18
17	油杯 Oilfiller	1	A570 Gr.A
18	螺栓 Eye Bolt	2	A193 B7
19	螺母 Eye Nut	2	A194 2H
20	销轴 Pin	2	A29 1035
21	开口销 Split Pin	2	A570 Gr.A
22	螺柱 Bolt		A193 B7
23	螺母 Nut		A194 2H
24	铆钉 Rivet	2	304
25	铭牌 Name Plate	1	304

DIMENSIONS AND WEIGHTS

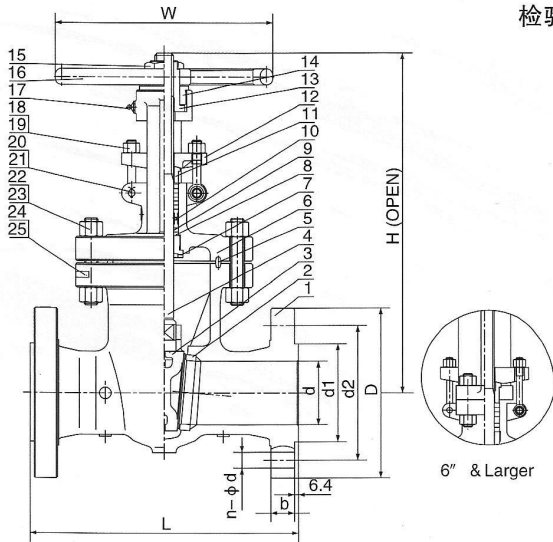
NPS		2	2-1/2	3	4	6	8	10	12	14	16
d	in	47	57	73	98	146	190	238	282	311	356
	mm	368	419	381	457	610	737	838	965	1029	1130
L-L1	in	14.50	16.50	15.00	18.00	24.00	29.00	33.00	38.00	40.50	44.50
(BF-BW)	mm	371	422	384	460	613	740	841	968	1038	1140
L2	in	14.62	16.62	15.12	18.12	24.12	29.12	33.12	38.12	40.88	44.88
(RTJ)	mm	371	422	384	460	613	740	841	968	1038	1140
d1	in	3.62	4.13	5.00	6.18	8.50	10.63	12.76	15.00	16.26	18.50
	mm	92	105	127	157	216	270	324	381	413	470
d2	in	6.50	7.50	7.50	9.25	12.50	15.50	18.50	21.00	22.00	24.25
	mm	165.1	190.5	190.5	234.9	317.5	393.7	469.9	533.4	558.8	615.9
D	in	8.50	9.62	9.50	11.50	15.00	18.50	21.50	24.00	25.25	27.75
	mm	216	244	241	292	381	470	545	610	640	705
b	in	1.50	1.63	1.50	1.75	2.20	2.50	2.75	3.13	3.38	3.50
	mm	38.5	41.5	38.5	44.5	56	63.5	70	79.5	86	89
n-φd	in	8-1.00	8-1.13	8-1.00	8-1.25	12-1.25	12-1.50	16-1.50	20-1.50	20-1.63	20-1.75
	mm	8-26	8-29	8-26	8-32	12-32	12-39	16-39	20-39	20-42	20-45
H	in	21.54	27.56	25.51	28.70	40.98	49.61	62.60	70.67	79.72	85.43
(open)	mm	547	700	648	729	1041	1260	1590	1795	2025	2170
W	in	11.81	13.78	15.75	17.72	22.05	18.11	24.02	24.02	29.92	29.92
	mm	300	350	400	450	560	460*	610*	610*	760*	760*
WT	RF	90	110	123	148	420	650	1160	1700	2300	2750
(Kg)	BW	82	93	108	122	359	566	980	1450	2000	2390

* Manual gear operator is recommended.

CLASS 1500 GATE VALVE

Standards :

结构长度	Face to Face Dimensions:	ANSI B16.10
法兰尺寸	End Flange Dimensions:	ANSI B16.5
设计标准	Basic Design:	API 600
检验标准	Test Standart:	API 598



Material List

No	Part Name	Qty	Material
1	阀体 Body	1	A216 WCB
2	阀座 Seat	2	A105+HF
3	闸板 Wedge	1	A216 WCB+F6
4	阀杆 Stem	1	A182 F6
5	垫片 Gasket	1	A29 1008
6	阀盖 Bonnet	1	A216 WCB
7	密封座 Back Seat	1	A276 410
8	填料 Packing	2	Stainless Steel Wire
9	填料 Packing	4-5	With Flexible Graphite
10	隔环 Distance Ring	1	A276 410
11	压套 Gland	1	A276 410
12	压板 Gland Flange	1	A216 WCB
13	阀母 Stem Nut	1	D-2
14	压母 Gland Nut	1	A29 1035
15	锁母 Lock Nut	1	A29 1035
16	手轮 Handwheel	1	60-40-18
17	油杯 Oilfiller	1	A570 Gr.A
18	螺栓 Eye Bolt	2	A193 B7
19	螺母 Eye Nut	2	A194 2H
20	销轴 Pin	2	A29 1035
21	开口销 Split Pin	2	A570 Gr.A
22	螺柱 Bolt		A193 B7
23	螺母 Nut		A194 2H
24	铆钉 Rivet	2	304
25	铭牌 Name Plate	1	304

DIMENSIONS AND WEIGHTS

NPS		2	2-1/2	3	4	6	8	10	12	14	16
d	mm	47	57	70	92	136	178	222	263	289	330
L-L1	in	14.50	16.50	18.50	21.50	27.75	32.75	39.00	44.50	49.50	54.50
(BF-BW)	mm	368	419	470	546	705	832	991	1130	1257	1384
L2	in	14.62	16.62	18.62	21.62	30.00	33.13	39.38	45.12	50.25	55.38
(RTJ)	mm	371	422	473	549	711	841	1000	1146	1276	1407
d1	in	3.62	4.13	5.00	6.18	8.05	10.63	12.76	15.00	16.26	18.50
	mm	92	105	127	157	216	270	324	381	413	470
d2	in	6.50	7.50	8.00	9.50	12.50	15.50	19.00	22.50	25.00	27.75
	mm	165.1	190.5	203.2	241.3	317.5	393.7	482.6	571.5	635.0	704.8
D	in	8.50	9.62	10.50	12.25	15.50	19.00	23.00	26.50	29.50	32.5
	mm	216	244	267	311	394	483	585	675	750	825
b	in	1.50	1.63	1.89	2.13	3.25	3.63	4.25	4.88	5.25	5.75
	mm	38.5	41.5	48.0	54.0	83.0	92.9	108.0	124.0	133.5	146.5
n-φd	in	8-1.00	8-1.13	8-1.25	8-1.38	12-1.50	12-1.75	12-2.00	16-2.13	16-2.38	16-2.63
	mm	8-26	8-29	8-32	8-35	12-39	12-45	12-51	16-54	16-61	16-67
H	in	22.60	27.56	31.73	34.92	42.48	53.94	59.84	65.00	76.57	88.58
(open)	mm	574	700	806	887	1079	1370	1520	1651	1945	2250
W	in	13.78	15.75	17.72	22.05	12.01	24.02	29.92	29.92	29.92	29.92
	mm	350	400	450	560	305*	610*	760*	760*	760*	760*
WT	RF	117	175	240	337	680	1228	3260	3260	4100	5960
(Kg)	BW	93	144	185	285	584	978	2850	2850	3320	4890

* Manual gear operator is recommended.